

# GRACE RECESS PUCK

## PREMIUM LED LINE

### Application

The Grace Recess Puck Light is designed for through hole mounting and provides interior or under cabinet lighting as well as limitless other uses where bright, dimmable light is desired.

### Configuration

The Grace Recess Puck comes in four color options: chrome, white, black or brushed nickel. Installation is as simple as drilling a hole and inserting the recess puck. It's held in place by two integrated springs. Pucks can be wired in either "daisy-chain" or "home-run" configuration. With such low wattage requirements, you can wire up to 20 pucks in one continuous run.

### Electrical/Connectors

Grace Recess Puck fixtures are 15v DC regulated, and come with two sets of 20/2 clear wires pre-installed for daisy chain wiring convenience. The fixtures consume 3.5 watts of power.

### LEDs

Grace Recess Puck are designed with TLD's select light engine, engineered for efficient thermal management and maximum longevity. Exclusive use of Nichia premium-binned LEDs ensures consistent chromaticity for the highest quality and longest life. The CRI rating is 85.

### Light output

The fixtures are task level brightness and are available in your choice of 3000K warm white or 3500K neutral white, to complement any design look.

### Power Supplies, Dimmers and Accessories

The Grace Recess Puck Light is fully compatible with TLD's entire line of low voltage 15v DC power supplies, dimmers and accessories.

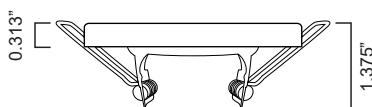
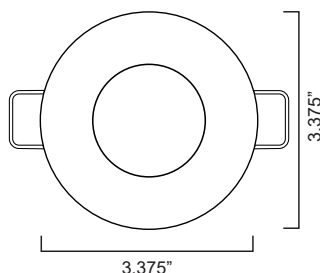
### Warranty

Fixtures are rated for 50,000 hours at 70% of lamp lumen output and backed by a Limited Lifetime Warranty by TLD, an innovative leader in LED technology.



**RP3**

Grace Recess Puck



**The Lighting Division**



Life In LED Light

100 Boxart Street • Suite 230  
Rochester, NY 14612  
585-697-0093  
Fax: 585-663-1432  
[thelightingdivision.com](http://thelightingdivision.com)



**Made In USA**  
of U.S. and  
imported parts

TLD-120-4-20

## Grace Recess Puck Installation Instructions

When connecting any electrical component please take note of the wire polarity. Wiring incorrectly may cause component failure.

**Power Supply - 15v DC regulated low voltage (Constant Voltage)**  
**ALWAYS FOLLOW LOCAL ELECTRICAL CODES**

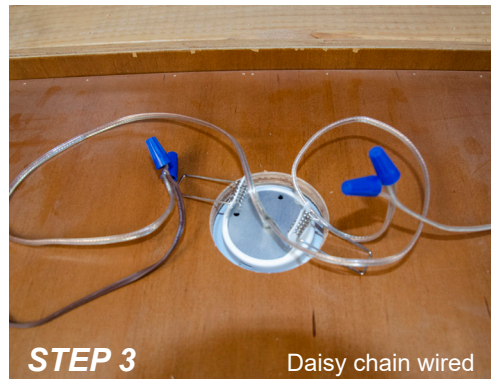
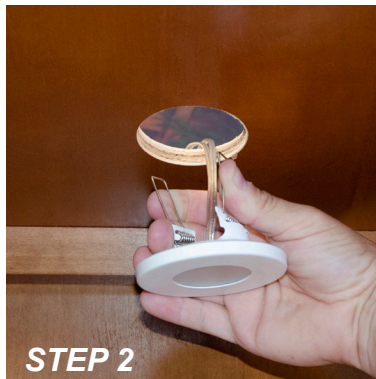
**Hard wire:**

- Connect "AC IN" side of the power supply to an acceptable AC power source being sure to obey all local electrical codes.
- Connect the RED (positive) wire from the DC OUT side of the power supply to the copper wire marked in RED from one set of wires of the fixture.
- Connect the Black (negative) wire from the DC OUT side of the power supply to the silver colored wire from the same set of wires as the positive from the fixture.

**Wall Plug -** Plug a suitable wattage size wall adaptor into an AC powered outlet. Use supplied terminal adaptor with wires to connect to fixture being careful to maintain the proper wire polarity.

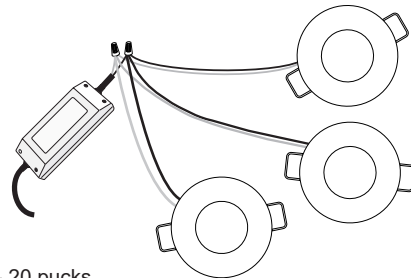
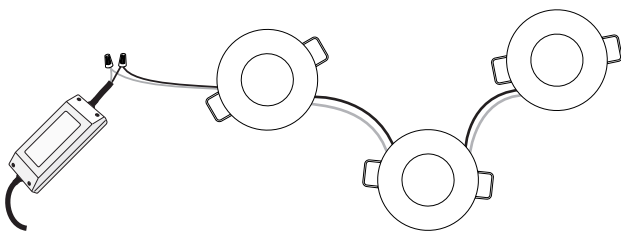
**Wiring Configurations -** Fixtures can be wired in either a daisy chain or home run configuration depending on your installation needs. There are two sets of wires coming from the fixture. Either set can be used as the power input. The other set is used for daisy chaining fixtures together for convenience. If daisy chain wiring is not being used then secure the other set so as to not cause any electrical shorts.

**Fixture Mounting -** Make a hole for the fixture using a 2 1/2 inch (64mm) hole saw. Feed the wire through the hole. Then fold up the spring loaded arms of the fixture and maneuver them through also so they come down and hold the fixture in place.



Daisy Chained

Home Run



Maximum End to End run (daisy chained) **RP3** - 20 pucks

	Light Color	Finish
<b>RP3</b>	30 - 3000K Warm White	<b>CH</b> - Chrome
	35 - 3500K Neutral White	<b>WH</b> - White
		<b>BK</b> - Black
		<b>NK</b> - Brushed Nickel

Light Output	
Power Consumption	3.5 Watts each
Source Lumens per Ft - 3000K	140
Source Lumens per Ft - 3500K	165